

GKN Driveline's 'Super LSD' for all-new Mazda3 MPS performance hatch

Tochigi, Japan 21st May, 2009: GKN Driveline's Super LSD (Limited Slip Differential), has been chosen for the all-new Mazda3 MPS performance superhatch, which was first revealed at the Geneva Motor Show this year.

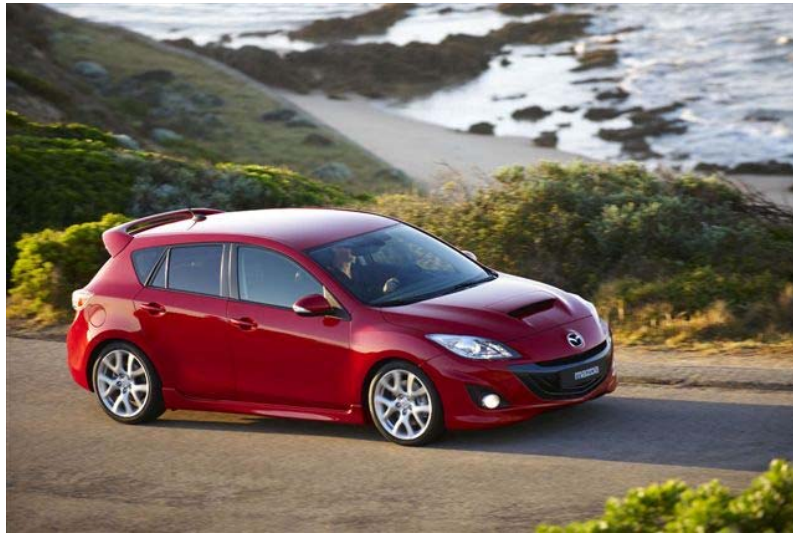
The all-new Mazda3 MPS front wheel drive superhatch is powered by a 260 ps (191 kW at 5,500 rpm) direct injection turbo petrol engine. To achieve optimum handling and steering characteristics, GKN Driveline's Super LSD was selected by Mazda engineers to harness this high power output and ensure its controllable delivery to the front wheels.

GKN Driveline's Super LSD is an innovative, compact and cost-effective engineering solution to the challenge of providing dynamic driving performance. It is designed to be fitted in place of standard differentials in front or rear axle or transaxle applications.

Graeme Walford, engineering and commercial director of GKN Driveline:

"We are very proud that Mazda has chosen GKN Driveline's Super LSD for the all-new Mazda3 MPS. Along with the existing applications in the Mazda MX-5 roadster and Mazda RX-8 sports coupe models, we are honoured that GKN Driveline's Super LSD is making a contribution to Mazda's 'Zoom-Zoom' spirit in its latest superhatch."

"Thanks to its torque-sensing technology, GKN Driveline's Super LSD enables Mazda to deliver excellent responsiveness and a sportier driving experience in these three distinctive models."



Editor's notes:

About GKN Driveline

GKN Driveline is the world's leading supplier of automotive driveline components and systems. As a global company serving the world's leading vehicle manufacturers, GKN Driveline's market leadership is based on strong enduring engineering capabilities that achieve optimum driveline solutions.

Backed by 250 years of successful engineering, GKN develops, builds, and supplies the most extensive and widely used range of automotive driveline components in the world – from the smallest ultra low-cost car to the most sophisticated premium vehicle demanding the most complex driving dynamics.

Consistently setting new technological benchmarks, GKN Driveline is a leading global producer of sideshafts, propshafts, mechanically and electronically controlled torque management systems and associated geared components.

www.gkndriveline.com

About the GKN Group

GKN plc is a global engineering business serving mainly the automotive, industrial, off-highway and aerospace markets. It has operations in more than 30 countries, nearly 40,000 employees in subsidiaries and joint ventures and had sales of £4.4 billion in the year ended 31 December 2008. GKN plc is listed on the London Stock Exchange (LSE: GKN).

www.gkn.com

Company Contact:

Paul Dinwiddy
Global Communication Director
GKN Driveline
Phone: + 44 1527 533 646
Cell: + 44 7801 077 523
E-mail: paul.dinwiddy@gkndriveline.com

Media Contact – Europe:

Simon Pearson
Phone: + 44 207 861 3158
Cell: + 44 7836 744 192
E-mail: simon@s-pearson.com

Media Contact – Americas:

Larry Weis or Andrea Wilmes
AutoCom Associates
Phone: + 1 248 647 8621
Cell: + 1 248 705 4448
E-mail: lweis@usautocom.com or
awilmes@usautocom.com

Media Contact – Japan:

Yoshinori Yamaguchi
Inoue Public Relations
Phone: + 81 35 269 2301
E-mail: yamaguchi@inoue-pr.com